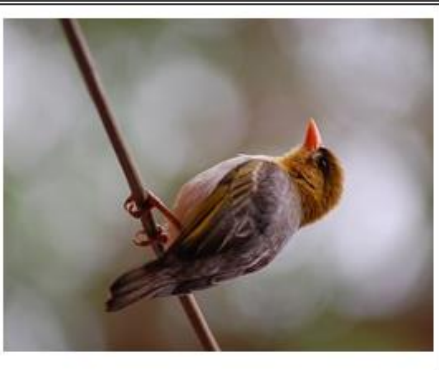


Unit 5B Asia
Materials

Table of Contents

One Leaf Rides the Wind (Picture cards).....	2
Round is a Mooncake (Craft template).....	8
<i>Mount Everest</i> by The Project Ready! Team	9
<i>Climbing Mount Everest</i> by The Project Ready! Team.....	16
One Happy Tiger (Picture cards)	25
Chengdu Can Do (Craft template)	30
Mine Yours (Memory game cards)	31

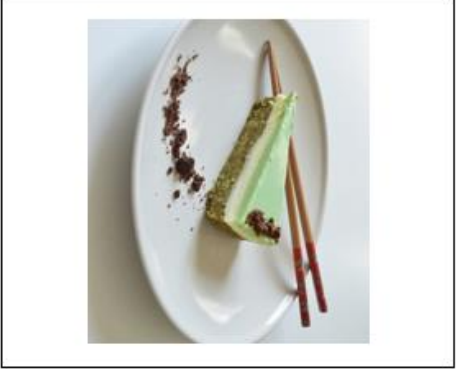
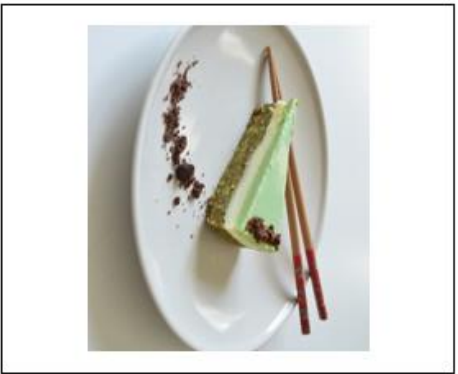
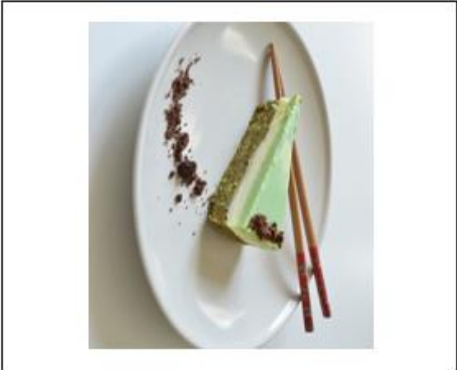
One Leaf Rides the Wind Picture Cards



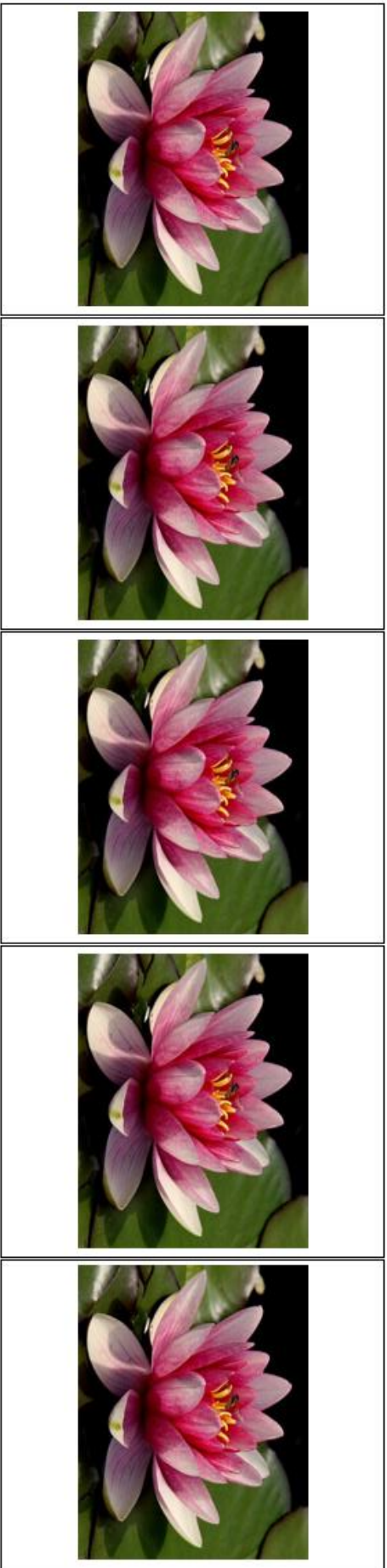
One Leaf Rides the Wind Picture Cards



One Leaf Rides the Wind Picture Cards



One Leaf Rides the Wind Picture Cards



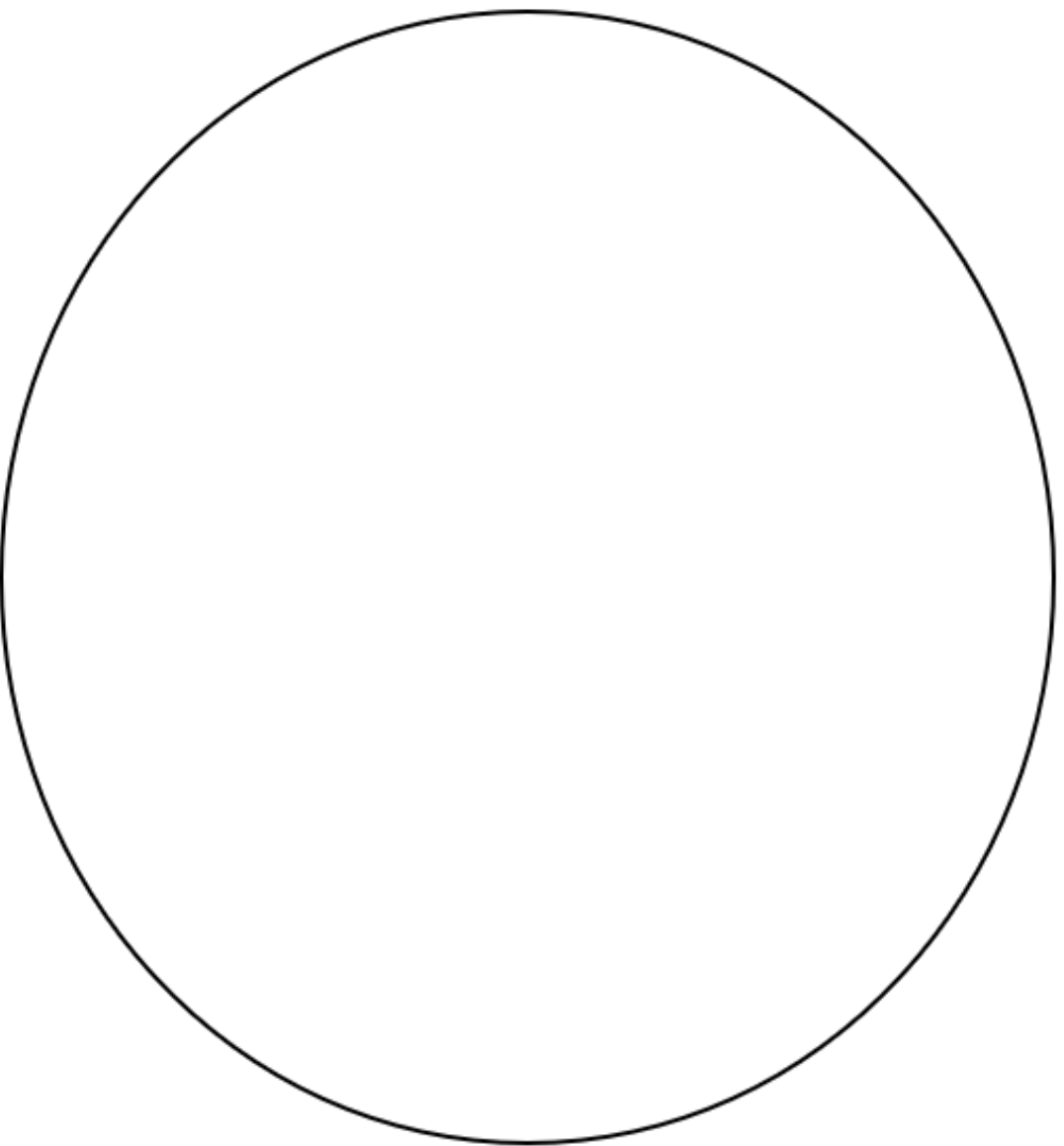
One Leaf Rides the Wind Picture Cards



One Leaf Rides the Wind Picture Cards



Round is a Mooncake by Roseanne Thong



Round is a _____.



Mount Everest

Text by The Project Ready Team



On the continent of Asia, in between the country of Nepal and an area of China known as Tibet, sits one of the world's most incredible natural wonders. Do you know what it is?



It is the tallest mountain in the world. Mount Everest!



Mount Everest is more than 29,000 feet tall. That is enormous! It is the tallest mountain in the world. Incredibly, Mount Everest grows taller every year.



Mount Everest is special to the people who live there. The Tibetan people call Mount Everest "Holy Mother." The people of Nepal call the mountain "goddess of the sky." Many visitors bring prayer flags to leave behind on the mountain. This is a Tibetan tradition that is believed to bless the land around the mountain.

Mount Everest has extreme weather. It gets really cold and really hot.



It can be as cold as -80 degrees Fahrenheit.



It can be as hot as 100 degrees Fahrenheit.

2017

	JANUARY	FEBRUARY	MARCH	APRIL	MAY	JUNE	JULY	AUGUST	SEPTEMBER	OCTOBER	NOVEMBER	DECEMBER
1	7	7	7	7	7	7	7	7	7	7	7	7
2	8	8	8	8	8	8	8	8	8	8	8	8
3	9	9	9	9	9	9	9	9	9	9	9	9
4	10	10	10	10	10	10	10	10	10	10	10	10
5	11	11	11	11	11	11	11	11	11	11	11	11
6	12	12	12	12	12	12	12	12	12	12	12	12
7	13	13	13	13	13	13	13	13	13	13	13	13
8	14	14	14	14	14	14	14	14	14	14	14	14
9	15	15	15	15	15	15	15	15	15	15	15	15
10	16	16	16	16	16	16	16	16	16	16	16	16
11	17	17	17	17	17	17	17	17	17	17	17	17
12	18	18	18	18	18	18	18	18	18	18	18	18
13	19	19	19	19	19	19	19	19	19	19	19	19
14	20	20	20	20	20	20	20	20	20	20	20	20
15	21	21	21	21	21	21	21	21	21	21	21	21
16	22	22	22	22	22	22	22	22	22	22	22	22
17	23	23	23	23	23	23	23	23	23	23	23	23
18	24	24	24	24	24	24	24	24	24	24	24	24
19	25	25	25	25	25	25	25	25	25	25	25	25
20	26	26	26	26	26	26	26	26	26	26	26	26
21	27	27	27	27	27	27	27	27	27	27	27	27
22	28	28	28	28	28	28	28	28	28	28	28	28
23	29	29	29	29	29	29	29	29	29	29	29	29
24	30	30	30	30	30	30	30	30	30	30	30	30
25	31	31	31	31	31	31	31	31	31	31	31	31



The wind can blow as fast as 200 mph.

The weather makes it safe to climb only in May or November.



jumping spider



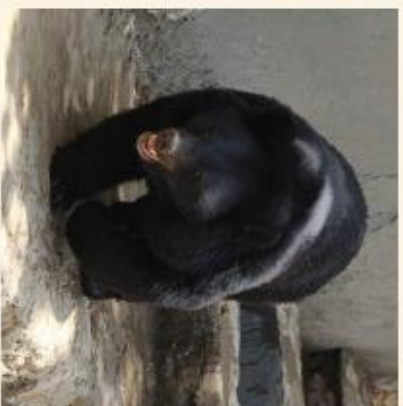
bar-headed goose



yak



Himalayan tahr



Himalayan black bear



pika

Many interesting animals live on Mount Everest. Jumping spiders, bar-headed geese, yaks, Himalayan tahr, Himalayan black bear, and pika all live on the tall mountain.



Climbing Mount Everest

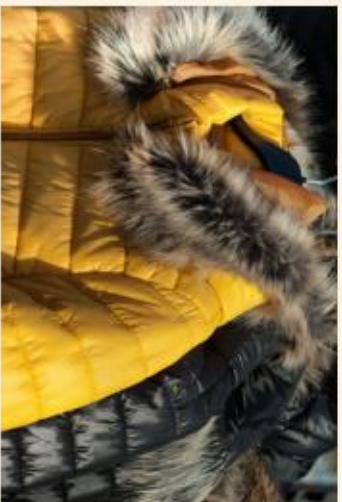
Text by The Project Ready Team



Mount Everest is the tallest mountain in the world. It is on the continent of Asia. Many people visit every year attempting to conquer the hazardous climb to the top.



dried food



warm clothes



sturdy boots



small tent



cooking utensils



climbing ropes

Climbers have to bring a lot of supplies on their journey. It takes about 40 days to climb the mountain so they will be away from their home for a long time. There are no stores on Mount Everest to buy extra supplies.



When climbers arrive at Mount Everest, they cannot start their journey right away. They must spend time at base camp to allow their bodies to get used to the new climate. They also must wait for the weather to be safe to climb.



Climbers face many challenges. The wind, cold, and snow mean they must climb slowly and carefully. There are 18 possible paths to the top of Mount Everest. Climbers chart their course before they begin.



As they **ascend** the mountain, climbers are constantly alert for danger. Avalanches are perilous and could mean climbers have to abandon their journey and go back down the mountain before they reach the top. An avalanche happens when snow tumbles down the mountain, covering everything in its path.



Safety equipment is very important on Mount Everest. Climbers need ropes and helmets to protect their bodies as they climb over slippery, ice-covered ground.



Our bodies need oxygen to stay healthy. We breathe it in. The oxygen levels are low on Mount Everest. Climbers carry oxygen in tanks to help them breathe.

Successful Climbs

Mount Everest has been successfully climbed more than 10.000 times.

- On May 29. 1953 a visitor from New Zealand named Edmund Hillary climbed Mount Everest with the help of Sherpa Tenzing Norgay. They were the first people to climb all the way to the top.
- The youngest person to climb Mount Everest was a thirteen year old from the United States of America named Jordan Romero.
- The oldest person to climb Mount Everest was Yuichiro Miura who was 80 years old.
- Kami Rita Sherpa from Nepal has climbed Mount Everest more than any other person. He has climbed the mountain more than 25 times.

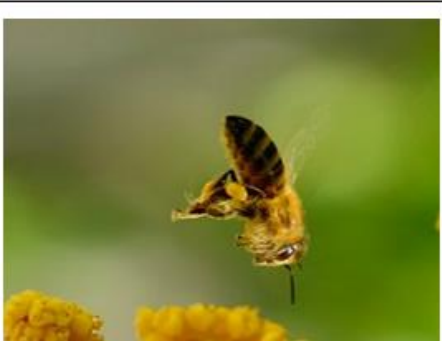
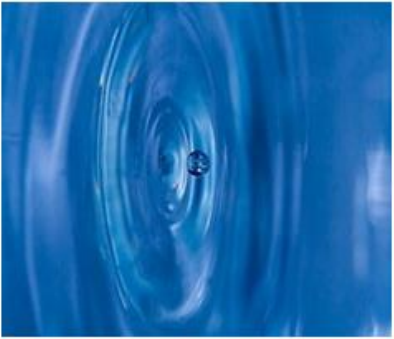
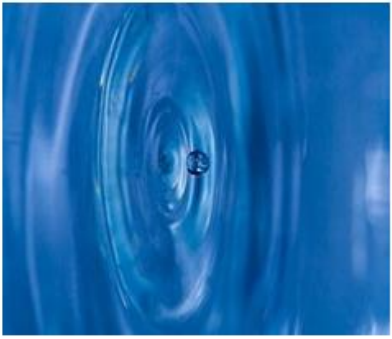
One Happy Tiger Picture Cards



One Happy Tiger Picture Cards



One Happy Tiger Picture Cards



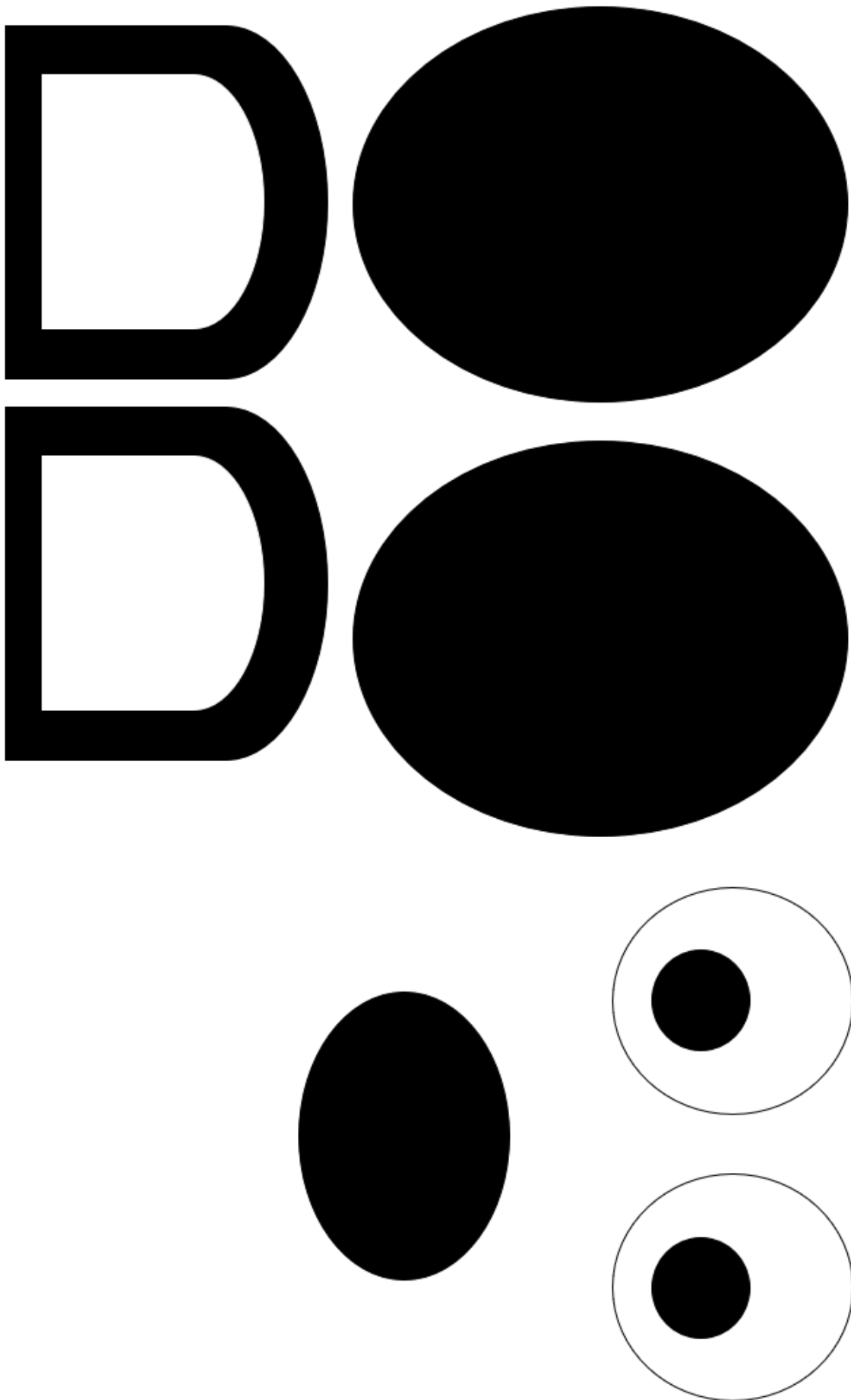
One Happy Tiger Picture Cards



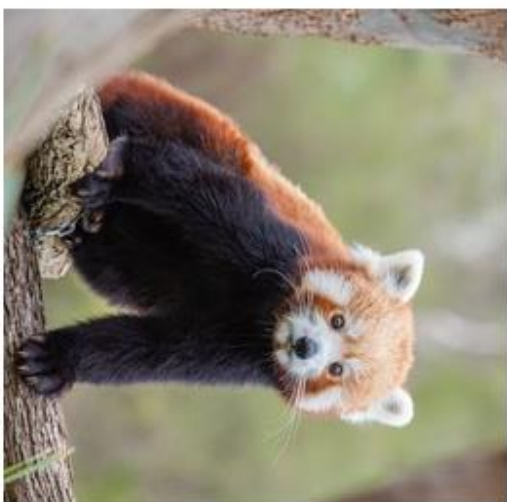
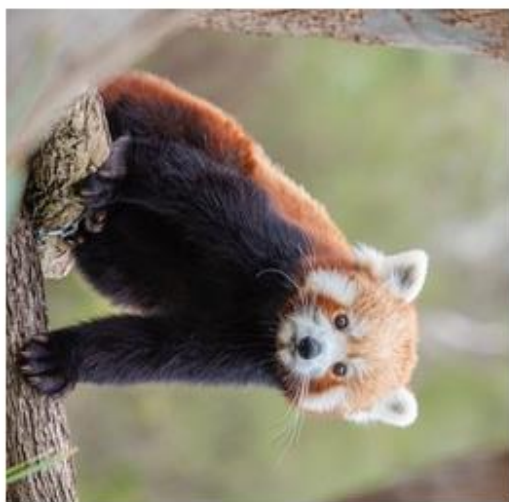
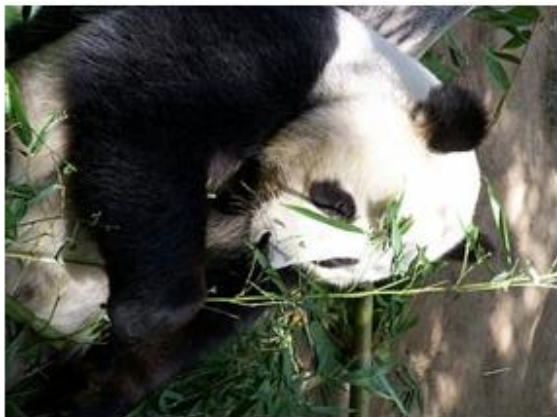
One Happy Tiger Picture Cards



Chengdu Can Do Craft Template



Mine Yours Memory Game Cards



Mine Yours Memory Game Cards

